



Manager 610-446-1000 ext. 2208
Human Resources 610-446-1000 ext. 2233

TOWNSHIP OF
HAVERFORD

DELAWARE COUNTY
1014 DARBY ROAD
HAVERTOWN, PA 19083-2551
(610) 446-1000

WILLIAM F. WECHSLER, PRESIDENT
LARRY HOLMES, ESQ. VICE PRESIDENT
DAVID R. BURMAN, TWP MANAGER/SECRETARY
AIMEE CUTHBERTSON, ASS'T TWP. MANAGER
JAMES BYRNE JR. ESQ, SOLICITOR
PENNONI ASSOCIATES, INC. ENGINEER

WARD COMMISSIONERS
1st Ward Stephen D'Emilio
2nd Ward Mario A. Oliva
3rd Ward Kevin McCloskey, ESQ
4th Ward Daniel J. Siegel, ESQ
5th Ward Andy Lewis
6th Ward Larry Holmes, ESQ
7th Ward Conor Quinn
8th Ward Gerry Hart, MD
9th Ward William F. Wechsler

Frequently Asked Recycling Questions & Answers
Courtesy of Haverford Township Environmental Advisory Council

Kitchen

- **Kitchen Plastic:** Accepted items include any plastic bottle or container with the recycling symbol #1-7.
 - **Kitchen Glass:** Accepted items include any bottles or jars that are clear, green or brown.
 - **Kitchen Paper:** Accepted items include cardboard boxes, cardboard paper towel roll tube, paper grocery bags, coated paper milk cartons.
 - **Kitchen metal:** Accepted items include aluminum, tin, steel and bi-metal beverage and food cans.
- *All items must be clean, dry and loose directly in a recycling can.***

Q: What cleaning procedures are required for any kitchen plastic, glass and paper liquid container (i.e. a carton of milk, juice, or wine)?

A: Discard residual liquid or food, rinse if necessary, and allow to dry. Remember the importance to conserve water. For some items that are too difficult to remove all residue, it may be better to discard in the trash than use excess water to clean. Place item loose directly in the recycling bin. Do NOT use a trash or plastic bag.

- Cartons ARE accepted if they say TetraPak, TetraBrik Aspetic or Purepac. The plastic pour spout does NOT need to be removed.

Q: What cleaning procedures are required for any kitchen aluminum cans? Tabs on or removed?

A: Rinse residual food out and allow container to dry. Place loose in recycling can. Tabs can be left on; however, if they are removed the tabs then should be placed in trash, as they are too small to recycle by themselves.

Q: Is Aluminum or Tin foil accepted?

A: No, both aluminum and tinfoil are NOT accepted in single stream recycling.

Q: Do labels and lids need to be removed from any glass jars or plastic containers before recycling?

- No. Labels do NOT need to be removed.
- No. Metal lids on glass containers are NOT recyclable and should be placed in trash
- No. Plastic caps are NOT recyclable and should be removed and placed in the trash. *Any item smaller than a credit card (like lids) are too small by themselves and get stuck in the machine causing delays and repairs. They are also at risk for popping off under pressure. Please don't place loose caps and lids in the recycling!

Q: What types of food packaging materials are recyclable? Does this include all plastic or foil potato chip, pretzel, cereal bags, Ziplock bags, and produce/shopping bags from grocery stores?

A:

- Yes. Frozen and pantry cardboard boxes, cardboard beverage containers and cardboard egg cartons ARE accepted in single stream recycling.
- Yes. Plastic containers with the recycling symbol 1-7 ARE accepted in single stream recycling.
- No. Ziplocks, Produce bags, bread bags cereal/cracker plastic bags and plastic grocery bags are NOT recyclable in single stream recycling. (See Alternative recycling options link)
- No. Chip bags, snack bags, granola bar wrappers and squeeze pouches are NOT recyclable in single stream recycling. (See Alternative recycling options link)

Q: Are dish gloves recyclable?

A: No, dish gloves are NOT recyclable in single stream recycling.

Q: What is NOT accepted for recycling?

A: Contaminated cardboard (such as greasy pizza boxes, food covered paper plates and dirty takeout containers), All Styrofoam (egg cartons, meat trays, packaging), Plastic Coated cardboard (coffee cups, ice cream containers and some

milk cartons) aerosol cleaning cans, cookwear, ceramic dishes, glassware, utensils, silverware, sponges, windows, paper towels, napkins, plates and tissues. Food is NOT recyclable and must be removed from recyclable materials.

Toiletries, Health & Medical

Accepted items include paper towel and toilet paper rolls, and plastic bottles with recycling symbol #1-7. All items must be clean, dry and loose directly in a recycling can.

Q: Are pill and prescription bottles recyclable?

A:

- YES. Prescription pill containers ARE accepted in single stream recycling.
- NO. Prescription container lids are NOT recyclable in single stream recycling and should be placed in the trash.
- Yes. Prescription bottles with a recycling symbol ARE recyclable in single stream recycling.

Q: Are make-up containers recyclable?

A: No. Make-up containers are NOT recyclable in single stream recycling. (See Alternative recycling options link)

Q: Are eye drop bottles recyclable?

A: No, eye drop bottles are NOT recyclable in single stream recycling.

Q: Are plastic disposable razors recyclable?

A: No, Plastic disposable razors are NOT recyclable in single stream recycling. Mixed metal and plastic make them unrecyclable. (See Alternative recycling options link)

Q: Are shaving cream cans recyclable?

A:

- Yes. Shaving Creams cans ARE recyclable in single stream recycling.
- The lid is NOT recyclable in single stream recycling
- The squirt top CAN be left on.

Q: Are disposable toothbrushes recyclable?

A: No, disposable toothbrushes are NOT recyclable in single stream recycling. (See [Alternative recycling options link](#))

Q: Are toothpaste tubes and bottles recyclable?

A: No, Toothpaste and tubes are NOT recyclable in single stream recycling. It is not possible to remove all remaining toothpaste from inside. (See [Alternative recycling options link](#))

Q: Are shampoo bottles with a narrow opening recyclable?

A: YES. If there's a recycling symbol 1-7 they ARE accepted in single stream recycling. Tip: try filling a container with water and squeeze the bottle to allow water in, shake vigorously and squirt out until clean.

Q: Are latex or other medical gloves recyclable under any circumstances, i.e. if they are used for household cleaning (not for medical purposes)?

A: No. Gloves are NOT recyclable in single stream recycling. (See [Alternative recycling options link](#))

Q: What is NOT accepted for recycling?

A: Disposable razors, floss, tooth brushes, toothpaste, coated paper cups, toilet paper, paper towels, Q-Tips, cotton balls, nail polish, feminine hygiene products and cleaning wipes.

Household

Accepted items include shipping boxes, cardboard, papers, plastic containers with recycling symbol #1-7. All items must be clean, dry and loose directly in a recycling can.

Q: What paper is included?

A: Accepted recyclable paper/Cardboard: Cardboard boxes, Newspaper, Envelopes, Junk mail, Cards*, Christmas paper*, Phone books, paperback books, Brochures, Magazines, File folders, Poster board and Ream wrappers.

*Not accepted: metallic paper, electronic singing cards, paper containing glitter or metal

Q: Do staples, tape and labels need to be removed from cardboard boxes?

A: No. Staples, tape and labels do NOT need to be removed.

Cardboard boxes DO need to be broken down. Please do NOT place broken down boxes inside another cardboard box.

Q: What types of mailing/packaging can be recycled (i.e. FedEx, UPS, and USPS paper, cardboard and plastic envelopes, and also insulated with bubble wrap)?

A:

- Yes. Cardboard envelopes and boxes ARE accepted in single stream recycling.
- No. Plastic envelopes, bubble envelopes, bubble wrap and air pockets are NOT recyclable in single stream. (See Alternative recycling options link)
- No. Combo paper covered bubble wrap insulated envelopes. When two or more materials are combined they cannot be recycled as-is in single stream, even if one or both are recyclable individually.

Q: What types of packing materials are recyclable? Does this include bubble wrap and peanuts?

A:

- No. Bubble wrap is NOT recyclable in single stream recycling. (See Alternative recycling link)
- No. Styrofoam packing peanuts are NOT recyclable in single stream recycling. (See Alternative recycling link)

Q: What types of bags are recyclable?

A:

- Yes. Brown paper bags ARE accepted in single stream recycling.
- No. All plastic bags are NOT recyclable in single stream recycling. Plastic bags are a serious problem for the recycling sorting machines. Plastic bags can get caught in the machinery causing delays and damage to equipment. (See Alternative recycling link)

Q: Is shredded paper accepted?

A: Yes, shredded papers IS accepted in single stream recycling, but should NOT be loose in the container, as these pieces are too small and will fly away easily.

Shredded paper should be placed in a brown paper bag only!

Q: Are aerosol cans recyclable?

A: Yes. Aerosol cans ARE accepted in single stream recycling, as long as the contents are NOT hazardous.

Q: What is not accepted?

A: Hard cover books, lightbulbs, tissues, stickers, address labels, bows, mirrors, windows, batteries, electronics, toys, hazardous aerosol cans.

Bringing Recycling to the Curb

Place all clean and dry recyclable items loose directly in a recycling can at the curb. **Do not put recyclables in a plastic trash or grocery bag.** Breakdown all boxes. Do not place cans in the street.

Q: Does the Township provide refuse and recycling containers? How do I request one?

A: The resident must provide their own refuse container, purchased through any retailer. Recycling cans are available at the Public Works Office in the township building for free if you moved into the township within 6 months, or for all residents for just \$20. Once ordered and paid for, your new can will be delivered to your residence for your convenience. Recycling stickers to place on any can is also available at the township building for no cost! 1014 Darby Road, Havertown PA 19083

Q: Is it OK to place recyclables in a plastic bag for collection inside the blue recycling can? A: No. Recyclables in single stream recycling need to be loose, directly placed in a can. Bundled recyclables can't be sorted properly at the facility, so all of it ends up in a landfill. Any items placed in plastic bags will be discarded as trash. If any items that are otherwise recyclable are comingled in plastic bags, paper bags or cardboard boxes, they will be discarded as trash.

Q: Is it OK to place recyclables in a cardboard box and to leave this on the curb next to the blue recycling can?

A: All recycling must be in a blue township can or any similar can with a recycling sticker attached. Recycling in plastic bags or cardboard boxes will be collected as trash.

Why Recycle?

Recycling helps our environment by keeping these items out of the landfills and incinerators, saves more resources for future generations, decreased air and water pollution from abstracting and refining natural resources, and requires less energy, which produces less carbon dioxide which is the leading cause of manmade climate change.

Residents benefit from single stream recycling by allowing all recyclable materials to be placed in one container. Single stream recycling simplifies the process by not requiring residents to sort different materials and tie/bundle paper materials. Help us keep taxes lower by doing your part, while creating a better environment to leave for the next generation.

Q: What company does Haverford Township contract with to manage our recycling?

A: Republic Recycling <https://www.republicservices.com/recycling-guide>

Q: What is not accepted for recycling? (See Alternative recycling link for more ways to recycle)

- Appliances
- Batteries
- Bubble Wrap
- Car parts
- Christmas Lights
- Clothes and shoes
- Coat Hangers
- Construction Debris
- Diapers
- Electronics
- Electrical Cords
- Fire Extinguisher
- Food Waste
- Food Wrap
- Garden Hoses
- Mobile phones
- Plastic Bags
- Rope
- Rubber Balls

- Sports Equipment
- Stuffed Animals
- Styrofoam
- Syringes/Razor Blades
- Tires
- Tools
- Toys
- Waxy Cardboard
- Wood
- Yard Waste (Accepted in brush pick up collection)

These items should never be mixed in regular recycling. Disposal requires special handling.

- Computers & Electronics
- Fluorescent tubes
- Hazardous waste
- Incandescent light bulbs
- Needles or syringes
- Paint (Call public works for complementary pick up, as we do not want wet paint dripping onto our streets from a trash truck)
- Toxic material containers

Questions

Q: Whom may I contact if I have questions about the Township's recycling practices?

Public Works Department

(610)446- 1000, extension 2263 or 2264

1014 Darby Road, Havertown PA 19083

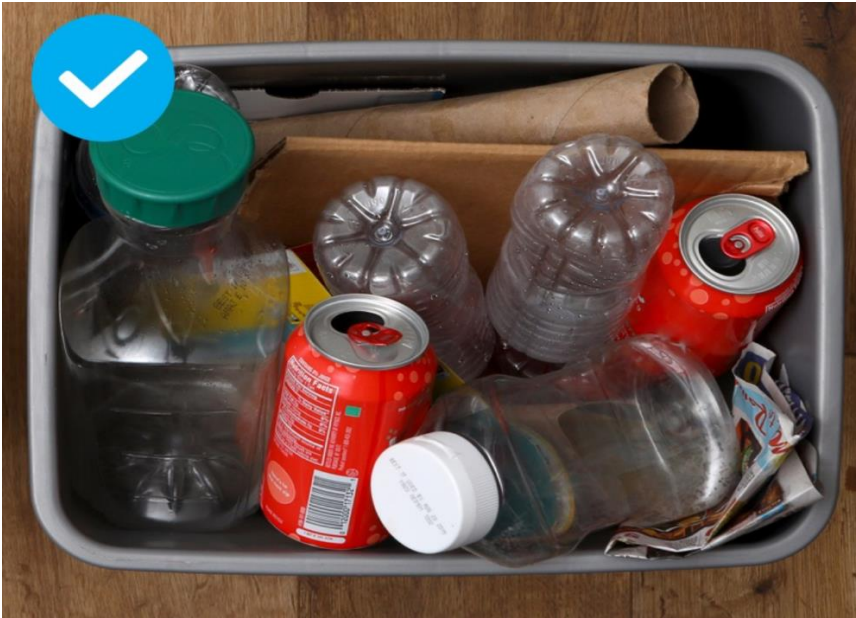
By email: publicworks@havtwp.org

Republic Services

(610)265-6337 Monday – Friday 7AM to 7PM Saturday 8AM to 1PM

By email: <https://www.republicservices.com/residents>

This is what your recycling should look like:



WHEN IN DOUBT, THROW IT OUT
(IN THE GARBAGE).